



TECHNICAL SPECIFICATION



Light source	High brightness LED
Color rendering index	> 70
Luminaire luminous flux	16000lm [average]
Power consumption	up to 200W
Power factor	0.95
Operation temperature	-30°C ~ 50°C
LPW@Tj25°C	110 lm/w (6000K)
Light distribution pattern	as customer requests
Long lifetime LED	> 50,000 hours

IP Degree	No UV or IR light radiation
IP 67	Special batwing and bisymmetrical light pattern.
	Optimized heat fins with artistic design
	110V/240V input Voltage

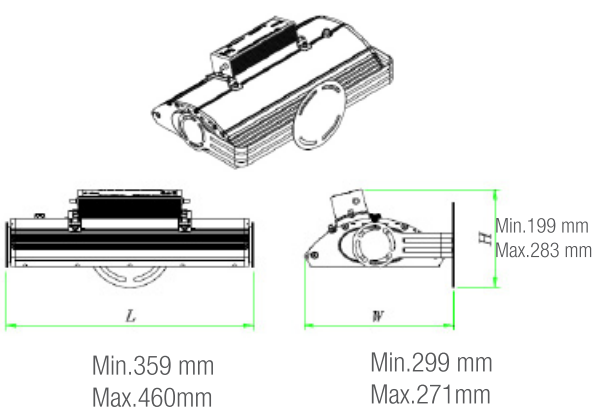
FEATURE & DIMENSION

ANTI - CORROSIVE

Aluminum Alloy , Chromating + Power coating and special coating on electrical circuit board High resistance to corrosive gas.

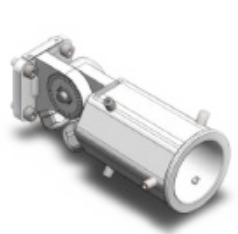
SPECIAL ANTI-CORROSIVE TREATMENT (CHROMATING AND POWER COATING) ON ALUMINUM SURFACE.

TIGHT CEILING OF LAMP INSIDE TO PREVENT POSSIBLE CONTAMINATION AND CORROSION OF ELECTRICAL CIRCUIT OF THE LAMPS.

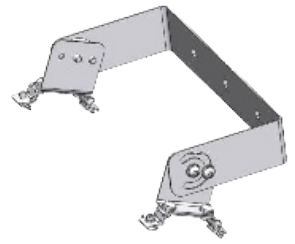


ARM TYPE

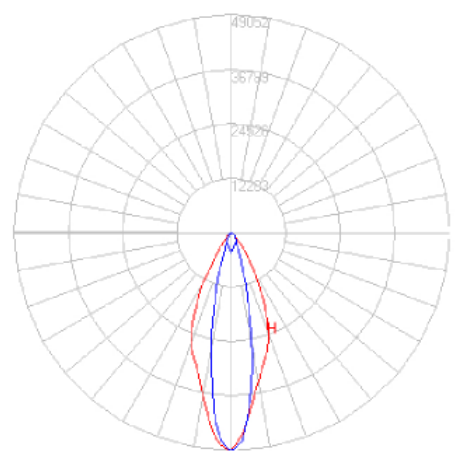
PHOTOMETRIC CHARACTERISTIC



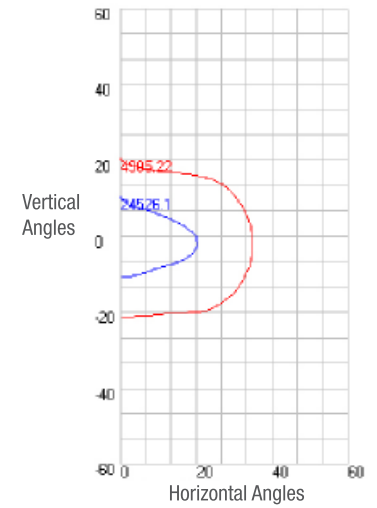
[APO - 04 - T]



[APO - 05 - B]



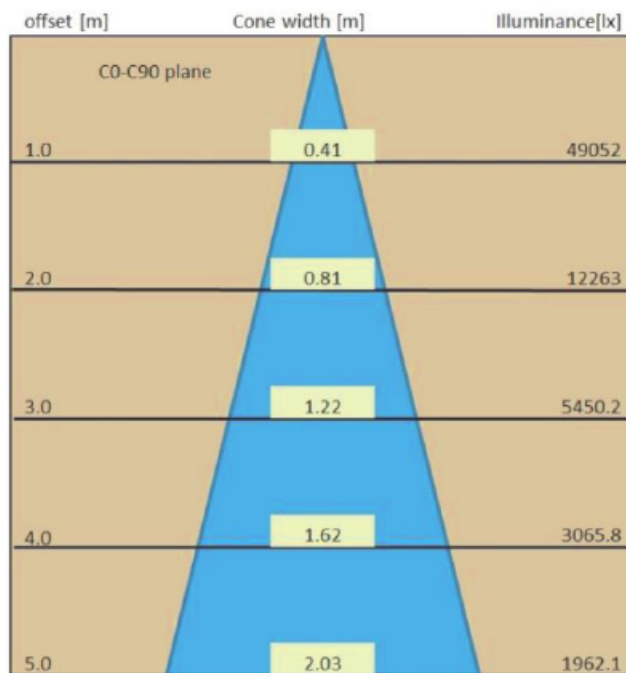
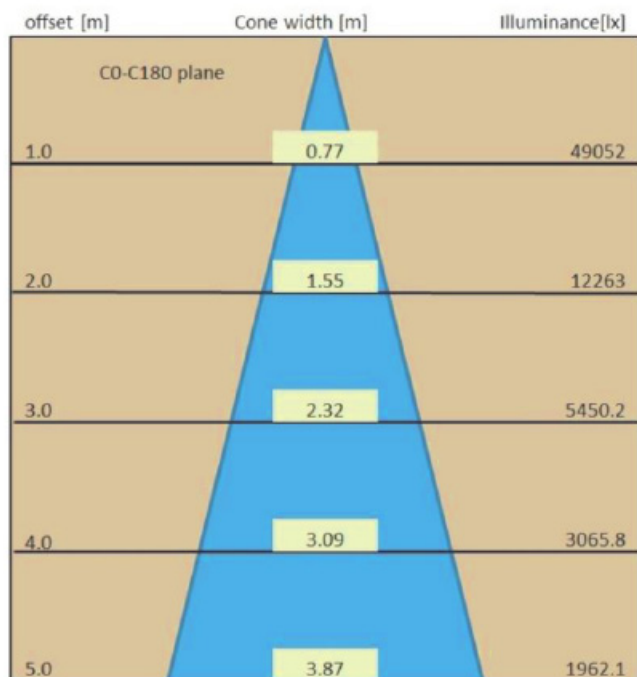
Light distribution pattern



Iso - Candela Line



CONE DIAGRAM

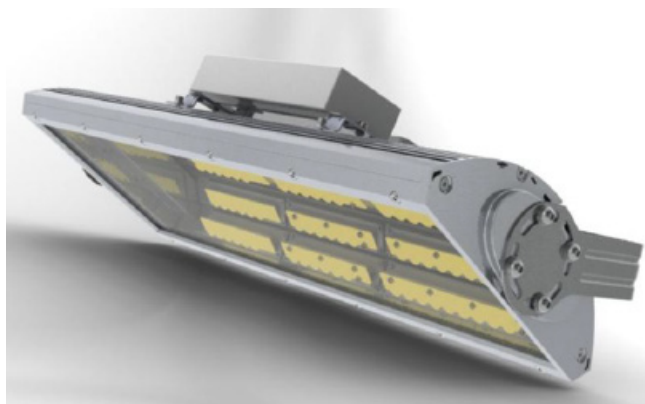


PRODUCT NUMBER

LCAVIF 20 CW 60 - 02 AC

- Luminaries: LC - LedCooper, AVIF - Led Flood Light
- Wattage: 20 = 195 - 200w
- CW: Cool white, WW: Warm white
- Beam angle: 60:40 degree, 40:25 degree
- Serial number
- Anti-Corrosive

APPLICATION



Be replacing the existing light such as sodium lamps(30W, 70W) with LED guard light, AVIF, 50% energy saving and fivefold increased lifespan are achieved.

Application

- Electrowinning
- Acid Plant
- Corrosive places
- City Streets
- Walkways
- Car Parks



CERTIFICATIONS

INTERNATIONAL

TUV

CE

UL

NATIONAL

CESMEC (1 DE 2)

CESMEC (2 DE 2)